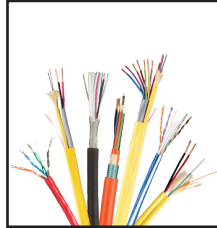


Selection Guide

ACTIVATE™ POWERED CABLE SOLUTIONS

- Standard Category PoE Cables
- PowerPipe™ Fault-Managed Copper Distribution Cables, dual Class 4 rated C14Z/CL4P
- PowerPipe™ Custom Hybrid Cables



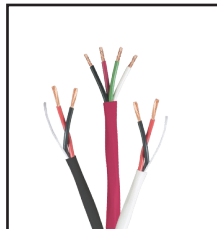
CLEARCAST™ A/V & BROADCAST CABLES

- SMPTE Camera Cables, including Hybrid Cables
- Analog & Digital Audio Cables
- Fiber Optic Cable
- UHD (4K) Precision Video Coax Cables
- Speaker Cables
- Premise Bundled Snake Cables
- Pro-Audio Cables



CLEARCAST™ HIGH STRAND PRO-AUDIO CABLE

- 12/2, 14/2, 14/4, 16/2, 16/4 unshielded
- High Strand Oxygen - Free Copper
- Riser, Plenum and Outdoor



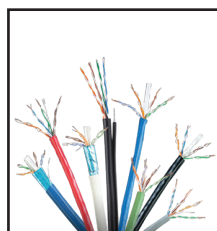
REMFO™ FIBER OPTIC CABLES

- Indoor & Outdoor
- Armored and Unarmored
- Polyethylene, Low Smoke Zero Halogen (LSZH), and PVC Jacket Types
- 2 – 288 fibers
- SM, MM, OM3 & OM4
- AquaLock™ Dry Tube Technology
- RemCore™ MicroTube Cables
- Loose Tube, Tight Buffer
- OFNP, OFNR, OFNR-LS, OFCP, OFCR, OSP



STREAMLINE™ LAN & PREMISE CABLES

- Category 6 and 6A
- Riser, Plenum, LSZH, OSP/ Direct Burial
- Armor and Bundling Options
- UTP & STP
- Compatible with PoE, PoE+, PoE++, and 4PPoE Systems
- Fiber Optic Cables also available



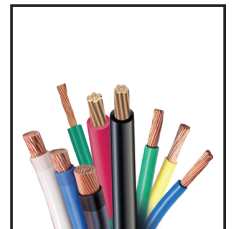
RENEWABLES™ FOR SOLAR & WIND POWER

- Solar Array PV (Photovoltaic) Cables – Copper, 1kV/2kV with Str BC or TC; 600V with Str BC; XLPE ins
- Collection Cables – DC Feeder Aluminum PV wire, rated 1kV/2kV, XLPE ins
- Power Equipment / Wind Tower Cables – Copper, Type RHH/RHH-2/USE-2, 600V, Str BC or TC, XLPE ins, wet location; Type WTTC 4C, 1000V, Str BC, XLPE ins, PVC jkt
- MV Primary Distribution Cables – Aluminum or Copper, 35kV, with TRXLPE ins and XLPE jkt
- Substation Cables – Variety of Copper, Fiber Optic and Hybrid instrumentation & control cables
- Fiber Optic Cables – 22 and 28 Series, loose tube, gel or dry AquaLock®, single jkt, armored or non-armored
- BC & TC Solid and Stranded Ground Wire
- UL Listed cables



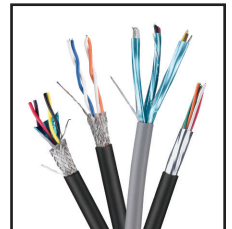
REMVOLT600™ COPPER POWER CABLES

- XHHW-2 Wire – 600V or 1kV, XLPE insulation
- RHH/RHW-2/USE-2 Wire - 600V or 1kV, XLPE insulation
- THWN-2/THHN Wire – 600V, PVC insulation, nylon jacket
- Copper Ground Wire – copper or tinned copper, solid or stranded conductors



TEKWIRE™ AUDIO, INSTRUMENTATION, CONTROL & DIGITAL SIGNALING CABLE

- Single, Multi conductor and Multi-pair
- Tinned copper conductors
- 24 AWG to 18 AWG
- Plenum, Riser, LSZH, Direct Burial
- RS 485 and RS 232
- Foil and foil/braid shield options
- 300V rated
- Rugged industrial designs available



Huge Selection and Personal Service

Remee
WIRE & CABLE

Engineered With You In Mind

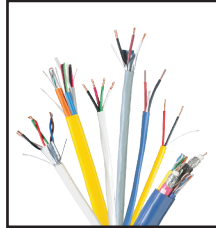
REEMEE WIRE & CABLE

Selection Guide

VIGILANCE™ SECURITY, ALARM & CONTROL CABLES

Security & Alarm Cables

- Riser, Plenum, Outdoor/Direct Burial and Wet Location
- Shielded or Unshielded
- AWM Approvals on certain cables



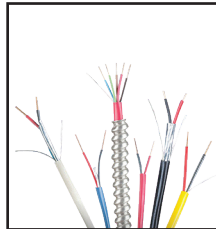
Access Control Composite Cables

- OSDP (RS-485) and/or Wiegand (Analog) Card Reader Protocols
- Card Reader + Lock Power + Door Contact + REX with Spare
- Riser, Plenum, Outdoor/Direct Burial and Wet Location
- Shielded or Unshielded Component types available



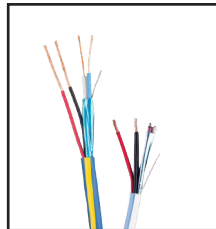
Fire Alarm Cables

- NYC LL39 150° and 200°
- Riser (FPLR) and Plenum (FPLP)
- Shielded or Unshielded
- Available in colors
- EZ Peel-Off Jacket for fast and secure installation



Shade & Lighting Control Cables

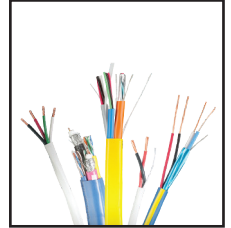
- Shade/Screen and Lighting Control Cables
- Crestron*, Lutron*, Elan*, AMX*, and others
- 0-10V LED Low Voltage



**Trademarks are owned by the respective brands. Contact Remee for more information.*

HOME AUTOMATION/MIXED MEDIA CABLES

- Riser, Plenum, Indoor/Outdoor, and Direct Burial
- Extruded Striped Jackets
- UTP (Cat 6 and Cat 6A) and Speaker Wire
- Composite, Siamese constructions



WET LOCATION CABLES

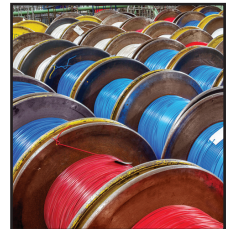
- Copper & Fiber Optic Cables
- Shielded or Unshielded
- Water Blocked
- Direct Burial/OSP/MSHA**

***Some cables are MSHA approved; Contact Remee for more information.*



REMNANT™ EXCESS INVENTORY CABLES

- Excess Inventory
- Random Lengths



OPTIONS & CUSTOM DESIGNS

- Armoring
- Extruded Striping
- Custom Jacket Printing
- Special Colors
- Custom Combinations – Hybrids, Composites, Bundled, etc.
- Customer Specific Designs



Remee Wire & Cable

1751 State Rte 17A, Suite 1
Florida, New York 10921

Phone: 800.431.3864

Fax: 845.651.4160

Email: info@remee.com

www.remee.com



© Copyright 2023, 2026, Remee Products Corporation,
Florida NY, dba Remee Wire & Cable