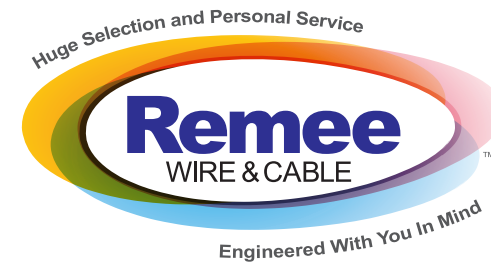


www.remee.com



REMEE WIRE & CABLE

**Clear Sound & Image Transmission
Solutions For the Broadcast Industry**

Standards & Certifications

Some Remee ClearCast™ cables meet the applicable ETL and CSA requirements.

STREAMline™ LAN & Premise cables are manufactured to meet or exceed all current EIA/TIA standards and meet applicable ETL & CSA requirements.

All Remee cable products are manufactured under ISO 9001 certification.

Additional Features Available

Here are some of the features you can select for a custom designed cable:

- Bundled, composite and hybrid cables
- Jacketing & insulation options
- Various shielding configurations
- Various conductor sizes
- Oxygen-free copper
- Non-standard colored jackets
- Other requirements available on request

Options for fiber optic cable types:

- Aqua-Lock® dry or gel-filled loose buffer
- MicroTube (loose buffer) mini distribution
- Multimode OM3, OM4

CLEARCAST™
BY REMEE



Remee Wire & Cable
1751 State Rte 17A, Suite1
Florida, New York 10921

Phone: 800.431.3864
FAX: 845.651.4160
Email: info@remee.com

www.remee.com



© 2025, Remee Products Corporation, Florida, NY, dba Remee Wire & Cable



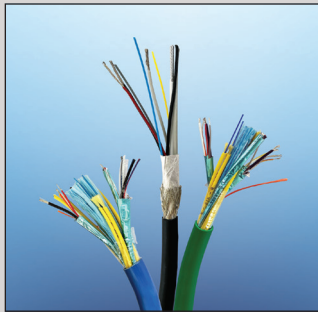
High Resolution Cabling for Audio/Video Recording and Broadcasting

www.remee.com

Remee Wire & Cable offers the broadcast engineering community a large variety of the most popular cables needed today for audio and video recording and broadcasting. Remee knows that reliability and integrity of the transmitted signal are of utmost importance, so we manufacture these cables for consistency and reliability under our tradename ClearCast™.

SMPTE 311 Camera Cables

SMPTE 311 cables are used for transmission in arenas, stadiums and for sporting events and large venues where long cable runs are needed. Every quality camera, camera position, truck dock, and more, requires SMPTE 311 cables today. Remee Wire & Cable was one of the pioneers to manufacture quality SMPTE 311 cable, as well as hybrid fiber/copper camera cables for best-in-class performance.



Some of the cameras that use SMPTE 311 cables include Hitachi, Alexa Fiber Remote, JVC GY-HM790, Sony cameras with HDCU-2500, Grass Valley LDX Series and Ikegami camera systems.

Here is a glimpse of Remee's standard offering of their SMPTE 311 Series Camera Cables, each designed for specific applications or environmental conditions. Modifications and custom designs are available and are a specialty at Remee.

- **Standard SMPTE 311 Camera Cable:** 20 AWG – 4C copper; 24 AWG – 2C copper; 2 Single Mode OS2 tight buffered fibers; overall 90% TC braid shield; stranded steel strength member
- **Riser / Wet Location:** 20 AWG – 4C copper; 24 AWG – 2C copper; 2 Single Mode OS2 tight buffered fibers; overall 90% TC braid shield, PVC jacket, water blocking tape; stranded steel strength member
- **Rugged Environment:** 20 AWG – 4C copper; 24 AWG – 2C copper; 2 Single Mode OS2 tight buffered fibers; overall 90% TC braid shield, water blocking tape, polyurethane jacket; up-jacketed stranded steel strength member
- **Multi-Channel Camera Cables** – 3-channel or 4-channel cables available on request

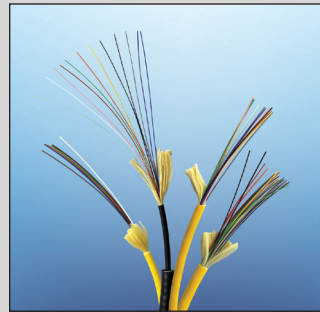
Part Numbers: CSMPPT Series

Fiber Optic Cables

Tight buffered fiber optic cables, often referred to as premise or distribution cables, are ideally suited for stadium and entertainment venue cable runs. They are easier to terminate than gel-filled loose tube fiber optic cable, and cleanup is also easier. Available in:

- Plenum and Riser Versions
- Indoor and Outdoor
- Armored and Non-armored

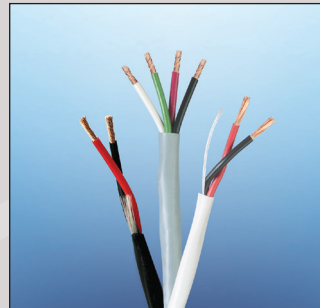
Part Numbers: FOC Series



Speaker Cables

Remee provides a variety of analog audio and speaker cables for recording studios, TV and radio stations, sound system installations and other audio applications. ClearCast™ speaker cables feature 2 stranded bare copper conductors in 10AWG to 16AWG, a Remguard Plenum Polymer or Riser jacket, and a CL3P/CL3R or CMP/CMR rating. 16-2 constructions are typically used for speaker cables in houses of worship and conference rooms. Larger gauge sizes are typically used for broadcast applications, stadiums and arenas for distributed audio. Smaller size conductors are also available for shorter runs.

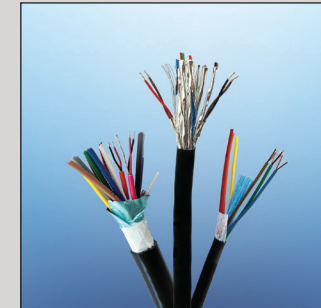
Part Numbers: SPK Series – 10 to 16AWG



Digital & Analog Audio Cables

Remee also offers a variety of single and multichannel digital and analog audio cables for recording studios, TV, and radio stations, sound system installations and other audio applications. ClearCast™ audio cables feature a choice of 1, 2, 4, 6, 8, and 12 pair in 22AWG or 24AWG, with individually shielded pairs and an overall shield. Available in Plenum, Riser, and Indoor/Outdoor (wet location) versions.

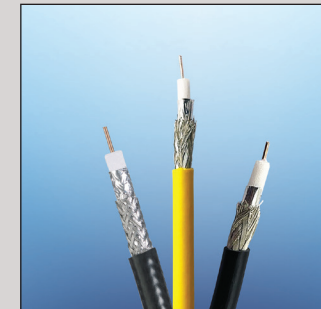
Part Numbers: AUD Series – 22AWG to 24AWG



HD 4K Coaxial Cables

ClearCast™ Precision Video Digital Coax cables operate at 6 GHz for 4K video resolution. These 75-ohm cables are used for HD/SDI, standard SDI, or other high resolution video applications. Each cable features a dual shield: an inner coax shielding tape plus an outer 95% coverage with tin copper braid shield. All cables include a solid bare copper conductor and outer PVC jacket. They are CMR riser rated and 100% sweep tested to 6.0 GHz.

Part Numbers: RG6, RG11, RG59, and RGMini Series

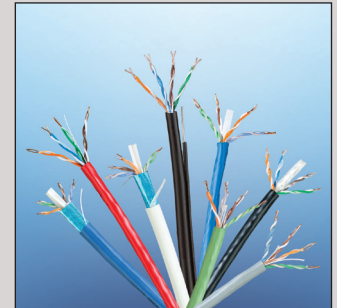


STREAMline™ LAN & Premise Cables

Remee's STREAMline™ LAN & Premise Cables are available:

- To meet/exceed EIA/TIA Category 5e, 6 or 6A
- Riser or plenum rated
- Wet location/direct burial
- Armored or bundled
- In UTP (unshielded), STP (shielded)

Part Numbers: CT Series



STREAMline™ Premise Bundled Snake Cables

Remee's STREAMline™ Premise Bundled Snake Cable meets or exceeds the TIA/EIA Category standards (before bundling) and is suitable for both data and broadcast audio/video applications.

Custom constructions available on request.



Pro Audio Cables

Remee's line-up of CH Series pro-audio cables feature hi-strand conductors for maximum flexibility. All cables are unshielded, use oxygen-free copper, are suitable for outdoor use and CL3R rated.

- 12AWG - 2C with hi-strand 105/30 bare copper
- 14AWG - 2C and 4C with hi-strand 105/34 bare copper
- 16AWG - 2C and 4C with hi-strand 19/29 bare copper

Part Numbers: CH Series

