



Short Form Product Catalog

Quality
Low Voltage Cables
by Remees



2024



INDEX

SECTION	PAGE
Renewables™ by Remeë – PV Wire, Fiber Optic Cable, Ground Wire	3
Vigilance™ Series	
Access Control Cable	5
Security & Alarm Cable	7
Fire Alarm Cable	10
Thermostat Cable	13
Fiber Optic Cable	15
Distribution, Indoor/Outdoor, OFNP/OFCP	16
Central Loose Tube Armored, OSP	17
LAN & Premise (Category) Cable	18
High-Strand Pro Audio & Speaker Cable	20
Wet Location Cable	22
Coaxial Cable	24
Color Coding Chart	26
Notes	27

- **Solar Array Cables** - Copper PV wire rated at 2000V with cross-linked polyethylene (XLPE) jackets for durability.
- **DC Feeder Cables** - Aluminum PV wire rated at 2000V, also with cross-linked polyethylene (XLPE) jackets for durability.
- **Fiber Optic Cables** - Interference-free Fiber Optic cables are available with loose tube construction featuring Remeë's gel-free AquaLock™ design; available with and without armor. Fiber optic cables in duct are available.
- **Bare Stranded Copper Ground Wire**
Common sizes are available upon request.



Photovoltaic Wire XLPE Insulation – 2kV Stranded Bare or Tinned Copper

PART ID	DESCRIPTION
PV14YYYYXMUL	14 AWG Cu 19-strand 2kV PV wire XLPE jkt (red and black)
PV12YYYYXMUL	12 AWG Cu 19-strand 2kV PV wire XLPE jkt (red and black)
PV10YYYYXMUL	10 AWG Cu 19-strand 2kV PV wire XLPE jkt (red and black)
PV08YYYYXMUL	8 AWG Cu 19-strand 2kV PV wire XLPE jkt (red and black)
PV06YYYYXMUL	6 AWG Cu 19-strand 2kV PV wire XLPE jkt (red and black)
PV04YYYYXMUL	4 AWG Cu 19-strand 2kV PV wire XLPE jkt (red and black)
PV02YYYYXMUL	2 AWG Cu 19-strand 2kV PV wire XLPE jkt (red and black)
PV01YYYYBCMUL	1 AWG Cu 37-strand 2kV PV wire XLPE jkt (red and black)
PV1/0YYYYBCMUL	1/0 AWG Cu 37-strand 2kV PV wire XLPE jkt (red and black)
PV2/0YYYYBCMUL	2/0 AWG Cu 37-strand 2kV PV wire XLPE jkt (red and black)
PV3/0YYYYBCMUL	3/0 AWG Cu 37-strand 2kV PV wire XLPE jkt (red and black)
PV4/0YYYYBCMUL	4/0 AWG Cu 37-strand 2kV PV wire XLPE jkt (red and black)
PV250YYYYBCMUL	250 AWG Cu 61-strand 2kV PV wire XLPE jkt (red and black)
PV300YYYYBCMUL	300 AWG Cu 61-strand 2kV PV wire XLPE jkt (red and black)
PV350YYYYBCMUL	350 AWG Cu 61-strand 2kV PV wire XLPE jkt (red and black)
PV400YYYYBCMUL	400 AWG Cu 61-strand 2kV PV wire XLPE jkt (red and black)
PV500YYYYBCMUL	500 AWG Cu 61-strand 2kV PV wire XLPE jkt (red and black)
PV600YYYYBCMUL	600 AWG Cu 91-strand 2kV PV wire XLPE jkt (red and black)
PV700YYYYBCMUL	700 AWG Cu 91-strand 2kV PV wire XLPE jkt (red and black)
PV750YYYYBCMUL	750 AWG Cu 91-strand 2kV PV wire XLPE jkt (red and black)
PV21000YYYYBCMUL	1000 AWG Cu 91-strand 2kV PV wire XLPE jkt (red and black)

Photovoltaic Wire XLPE Insulation - 2kV Aluminum

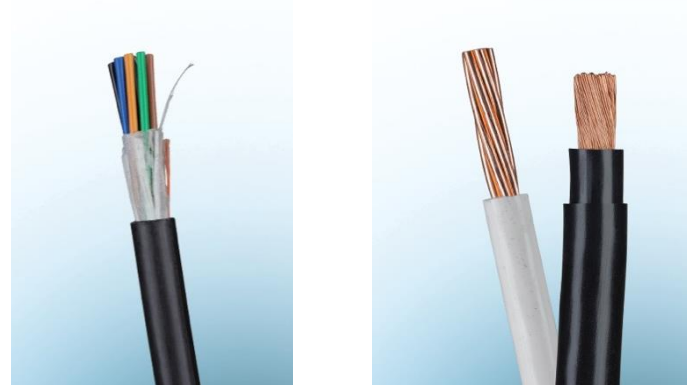
PART ID	DESCRIPTION
PV4019ALMUL	4/0, 19 Str, NS, XLPE jkt, (red and black)
PV35037ALMUL	350, 37 Str, NS, XLPE jkt, (red and black)
PV40037ALMUL	400, 37 Str, NS, XLPE jkt, (red and black)
PV50037ALMUL	500, 37 Str, NS, XLPE jkt, (red and black)
PV60061ALMUL	600, 61 Str, NS, XLPE jkt, (red and black)
PV75061ALMUL	750, 61 Str, NS, XLPE jkt, (red and black)
PV100061ALMUL	1000, 61 Str, NS, XLPE jkt, (red and black)

Fiber Optic Cables – Loose Tube

PART ID	DESCRIPTION
22-XXX-XXX-EXSXWN	22 Series Loose Tube Single Jacket Non-Armored - Loose Tube Fiber
22D-XXX-XXX-EXSXWN	22D Series Loose Tube Single Jacket Non-Armored with AquaLock® - Loose Tube Fiber Gel Free
28-XXX-XXX-EXSXWN	28 Series Loose Tube Single Jacket Single Armor - Loose Tube Fiber - Armored
28D-XXX-XXX-EXSXWN	28D Series Loose Tube Single Jacket Single Armor with AquaLock® - Loose Tube Fiber - Armored (Gel Free)

Bare Stranded Copper Ground Wire

PART ID	DESCRIPTION
	Common sizes are available upon request





VIGILANCE™ ACCESS CONTROL CABLE

These newly engineered security cables from Remeë have been designed specifically for access control technologies, such as Wiegand, the Open Supervised Device Protocol (OSDP) specification, and BACnet (a communication protocol for Building Automation and Control networks). Ideally suited for door locks, card readers In and REX, and emergency exit doors with DSM, horn/strobe and motion sensors.





VIGILANCE™ ACCESS CONTROL CABLE

PART ID	DESCRIPTION
725901L1	WEIGAND ACCESS CONTROL COMBO CMP 500' RL
725901M1	WEIGAND ACCESS CONTROL COMBO CMP 1000' RL
R00907L1Y	WEIGAND ACCESS CONTROL COMBO CMR 500' RL
R00907M1Y	WEIGAND ACCESS CONTROL COMBO CMR 1000' RL
R00907WBTM1B	WEIGAND ACCESS CONTROL COMBO OSP 1000' RL
725953M1V	OSDP ACCESS CONTROL COMBO 22/2P CMP 1000' RL
725937M1Y	OSDP ACCESS CONTROL COMBO CMP 1000' RL
REM182222SHPM1F	CRESTRON® CMP 1000' RL
REM182222SHLTM1OY	CRESTRON® CMR 1000' RL
LU216PM1C	LUTRON® LVBP CMP 16/2 SBC 1000' RL
LUESCPM1C	LUTRON® ESC CMP 22/5C SBC 1000' RL
LUQSCPM1WO	LUTRON® QSC CMP 22/1PSH 16/2 1000' RL
LUQSCM1OZ	LUTRON® QSC CMR 22/1PSH 16/2 1000' RL
LUQSHLPM1WN	LUTRON® QSH CMP 22/1PSH 12/2 1000' RL
LUGRX346SPM1WE	LUTRON® GRX CMP 22/1PSH 18/2 1000' RL
LUGRX346SM1OE	LUTRON® GRX CMP 22/1PSH 18/2 1000' RL
LUGRX46LPM1WO	LUTRON® GRX+ CMP 22/1PSH 12/2 18/1 1000' RL
LUGRX46LM1OO	LUTRON® GRX+ CMR 22/1PSH 12/2 18/1 1000' RL
RMMJ5AE3501564L1O	2XCAT5 2XRG6U QUAD CMR BLUE 500' RL
RMMJ6A1564WL1O	2XCAT6 2XRG6U QUAD CMR BLUE 500' RL
RMMS5AE+1006L3B	CAT5E, 18/2 SIAMESE CMR BLACK 500' RL
RMMS5AE+1006M1B	CAT5E, 18/2 SIAMESE CMR BLACK 1000' RL
RMMS5AE+1023L1Z	CAT5E, 16/4 SIAMESE CMR ORANGE 500' RL



VIGILANCE™ SECURITY & ALARM CABLE

Standard Plenum-rated Security Cables

The 725 Series cable offering for 300V control, instrumentation and security cable installations features Remguard Plenum Polymer insulation and jackets over stranded copper conductors. Shielded and unshielded versions are offered with a selection of AWG sizes and number of conductors.

Standard Riser-rated Security Cables

The 900 and R00 Series are Riser-Rated versions of most of the 725 series. With PVC insulation and jackets, these Riser cables are more flexible than their plenum-rated cousins.

They include stranded copper conductors and a choice of shielded or unshielded versions. Also included in this series are several water blocked cables for Direct Burial use.





VIGILANCE™ SECURITY & ALARM CABLE

PART ID	DESCRIPTION
725120**W	12/2 STR BC NS CMP WHITE 1000' RL
725140**W	14/2 STR BC NS CMP WHITE 1000' RL
725146**W	14/4 STR BC NS CMP WHITE 1000' RL
725160**W	16/2 STR BC NS CMP WHITE 1000' RL
725164**W	16/4 STR BC NS CMP WHITE 1000' RL
725180**W	18/2 STR BC NS CMP WHITE 1000' RL
725182**W	18/3 STR BC NS CMP WHITE 1000' RL
725184**W	18/4 STR BC NS CMP WHITE 1000' RL
725186**W	18/6 STR BC NS CMP WHITE 1000' RL
725188**W	18/8 STR BC NS CMP WHITE 1000' RL
725220**W	22/2 STR BC NS CMP WHITE 1000' RL
725224**W	22/4 STR BC NS CMP WHITE 1000' BX
725228**W	22/6 STR BC NS CMP WHITE 1000' RL
725121**W	12/2 STR BC SHLD CMP WHITE 1000' RL
725141**W	14/2 STR BC SHLD CMP WHITE 1000' RL
725161**W	16/2 STR BC SHLD CMP WHITE 1000' RL
725181**W	16/4 STR BC SHLD CMP WHITE 1000' RL
725183**W	18/2 STR BC SHLD CMP WHITE 1000' RL
725163**W	18/3 STR BC SHLD CMP WHITE 1000' RL
725185**W	18/4 STR BC SHLD CMP WHITE 1000' RL
725187**W	18/6 STR BC SHLD CMP WHITE 1000' RL
725189**W	18/8 STR BC SHLD CMP WHITE 1000' RL

** = See Product Number Key on page 26



VIGILANCE™ SECURITY & ALARM CABLE

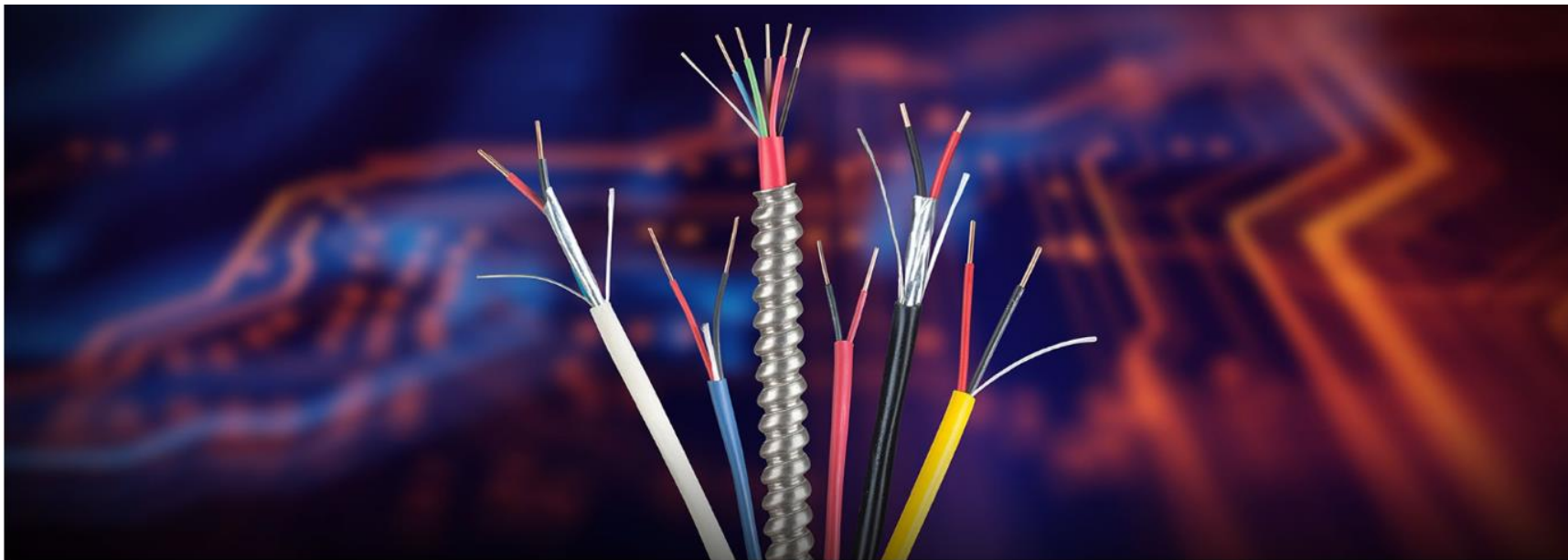
PART ID	DESCRIPTION
725221**W	22/2 STR BC SHLD CMP WHITE 1000' RL
725223**W	22/4 STR BC SHLD CMP WHITE 1000' RL
725227**W	22/2PR STR BC EPS CMP WHITE 1000' BX
7252285**W	22/6 STR BC SHLD CMP WHITE 1000' BX
R001002R/7B**G	16/2 STR BC NS CMR GRAY 1000' RL
R001023R**G	16/4 STR BC NS CMR GRAY 1000' RL
R001006R**G	18/2 STR BC NS CMR GRAY 1000' BX
R001008R**G	18/4 STR BC NS CMR GRAY 1000' BX
R0010186**G	18/6 STR BC NS CMR GRAY 1000' RL
R001032**G	22/2 STR BC NS CMR GRAY 1000' BX
R001034**G	22/4 STR BC NS CMR GRAY 1000' BX
R001036**G	22/6 STR BC NS CMR GRAY 1000' BX
900902**G	16/2 STR BC SHLD CMR GRAY 1000' RL
900912R**G	18/2 STR BC SHLD CMR GRAY 1000' RL
900913**G	18/3 STR BC SHLD CMR GRAY 1000' RL
900914**G	18/4 STR BC SHLD CMR GRAY 1000' RL
900916**	18/6 STR BC SHLD CMR GRAY 1000' RL
900942R**G	22/2 STR BC SHLD CMR GRAY 1000' BX
900944R**G	22/4 STR BC SHLD CMR GRAY 1000' BX
900946R**G	22/6 STR BC SHLD CMR GRAY 1000' BX
900948**G	22/8 STR BC SHLD CMR GRAY 1000' RL

** = See Product Number Key on page 26



VIGILANCE™ FIRE ALARM CABLE

Fire alarm systems serve as a lifeline and a connection to first responders. When a signal is transmitted to central monitoring center, failure is not an option. It must be guaranteed. Conventional Fire Alarm Systems have been around for many years and have changed little. They provide well proven technology protecting many hundreds of thousands of properties worldwide. Remeë fire alarm cables are backed with our 50+ years of manufacturing experience in our New York facility. All Remeë Fire Alarm Cables are ETL listed and manufactured under ISO 9001 certification.



VIGILANCE™ FIRE ALARM CABLE



PART ID	DESCRIPTION
760184**R	18/4 SBC NS FPLP RED 1000' RL
760180**R	18/2 SBC NS FPLP RED 1000' RL
760160**R	16/2 SBC NS FPLP RED 1000' RL
760164**R	16/4 SBC NS FPLP RED 1000' RL
760140**R	14/2 SBC NS FPLP RED 1000' RL
760144**R	14/4 SBC NS FPLP RED 1000' RL
760120**R	12/2 SBC NS FPLP RED 1000' RL
760181**R	18/2 SBC SHLD FPLP RED 1000' RL
760185**R	18/4 SBC SHLD FPLP RED 1000' RL
760161**R	16/2 SBC SHLD FPLP RED 1000' RL
760141**R	14/2 SBC SHLD FPLP RED 1000' RL
760121**R	12/2 SBC SHLD FPLP RED 1000' RL
R00404**R	22/4 SBC NS FLPR RED 1000' BX
R00293**R	18/2 SBC NS FPLR RED 1000' RL
R00294**R	18/4 SBC NS FPLR RED 1000' RL
R00296**R	18/6 SBC NS FPLR RED 1000' RL
R00301**R	16/2 SBC NS FPLR RED 1000' RL
R00302**R	16/4 SBC NS FPLR RED 1000' RL
R00305**R	14/2 SBC NS FPLR RED 1000' RL
R00317**R	12/2 SBC NS FLPR RED 1000' RL
R00310**R	18/2 SBC SHLD FPLR RED 1000' RL
R00303**R	16/2 SBC SHLD FPLR RED 1000' RL
R00304**R	16/4 SBC SHLD FPLR RED 1000' RL
R00306**R	14/2 SBC SHLD FPLR RED 1000' RL
R00308**R	14/4 SBC SHLD FPLR RED 1000' RL

** = See Product Number Key on page 26



VIGILANCE™ NY FIRE ALARM CABLE (LL39)

Remeë manufactures Fire Alarm Cables to meet the specifications of municipalities, including NYC Local Law 39 (LL39) Fire Alarm requirements.

PART ID	DESCRIPTION
NY516UH**R	16/1PR SOL BC NY5 FA 150D FPLP RD 1000FT
NY516SH**R	16/1PR SOL BC NY5FA 150D SH FPLP RD 1000
NY514UH**R	14/1PR SOL BC NY5FA 150D FPLP RD 1000' R
NY514SH**R	14/1PR SOL BC NY5FA 150D SH FPLP RD 1000
NY512UH**R	12/2 SOL BC NY5 FA 150D FPLP RD 1000FT
NY512SH**R	12/2 SH SOL BC NY5 FA 150D FPLP RD 1000
NY164CUH**R	16 4C SOL BC NY5 FA 150D FPLP RD 1000FT
NY164CSH**R	16 4C SOL BC NY5FA 150D SH FPLP RD 1000
NY144CUH**R	14/4 SOL BC NY5 FA 150D FPLP RD 1000
NY144CSH**R	14 4C SOL BC NY5FA 150D SH FPLP RD 1000
NY514UT**R	14/1PR SOL BC NY5 FA 200D FPLP RD 1000FT
NY14PUT**R	14/2PR SOL BC NY5 FA 200D FPLP RD 1000
NY516UT**R	16/1PR SOL BC NY5 FA 200D FPLP RD 1000FT
NY16PUT**R	16/2PR SOL BC NY5 FA 200D FPLP RD 1000FT
NY512ST**R	12/1P SOL BC SHLD NY5FA 200D RD 1000' RL
NY514ST**R	14/1PR SOL BC NY5FA 200D SH FPLP RD 1000
NY14PST**R	14/2PR SOL BC NY5FA 200D SH FPLP RD 1000
NY516ST**R	16/1P SOLBC SHLD NY5FA 200D RD 1000' RL
NY16PST**R	16/2P SOLBC SHLD NY5FA 200D RD 1000' RL

** = See Product Number Key on page 26



VIGILANCE™ THERMOSTAT CABLE

A thermostat is a regulating device component which senses the temperature of a physical system and performs actions so that the system's temperature is maintained near a desired setpoint.

Thermostats are used in any device or system that heats or cools to a set temperature point.





VIGILANCE™ THERMOSTAT CABLE

PART ID	DESCRIPTION
182THPL1N	18/2 SBC BRW TSTAT CMP 4 X 500' RL/BO
183THPL1N	18/3 SBC BRW TSTAT CMP 4 X 500' RL/BO
184THPT1N	18/4 SBC BRW TSTAT CMP 4 X 250' RL/BO
185THPT1N	18/5 SBC BRW TSTAT CMP 4 X 250' RL/BO
186THPT1N	18/6 SBC BRW TSTAT CMP 4 X 250' RL/BO
188THPT1N	18/8 SBC BRW TSTAT CMP 2 X 250' RL/BO
182THL1N	18/2 SBC BRW TSTAT CMP 4 X 500' RL/BO
183THL1N	18/3 SBC BRW TSTAT CMR 4 X 500' RL/BO
184THT1N	18/4 SBC BRW TSTAT CMR 4 X 250' RL/BO
185THT1N	18/5 SBC BRW TSTAT CMR 4 X 250' RL/BO
186THT1N	18/6 SBC BRW TSTAT CMR 4 X 250' RL/BO
188THT1N	18/8 SBC BRW TSTAT CMR 2 X 250' RL/BO
1810THT1N	18/10 SBC BRW TSTAT CMR 2 X 250' RL/BO
202THL1N	20/2 SBC BRW TSTAT CMR 4 X 500' RL/BO
204THT1N	20/4 SBC BRW TSTAT CMR 4 X 250' RL/BO

FIBER OPTIC CABLE

Remeë manufactures a large variety of cable. Our fiber optic cable offering includes:

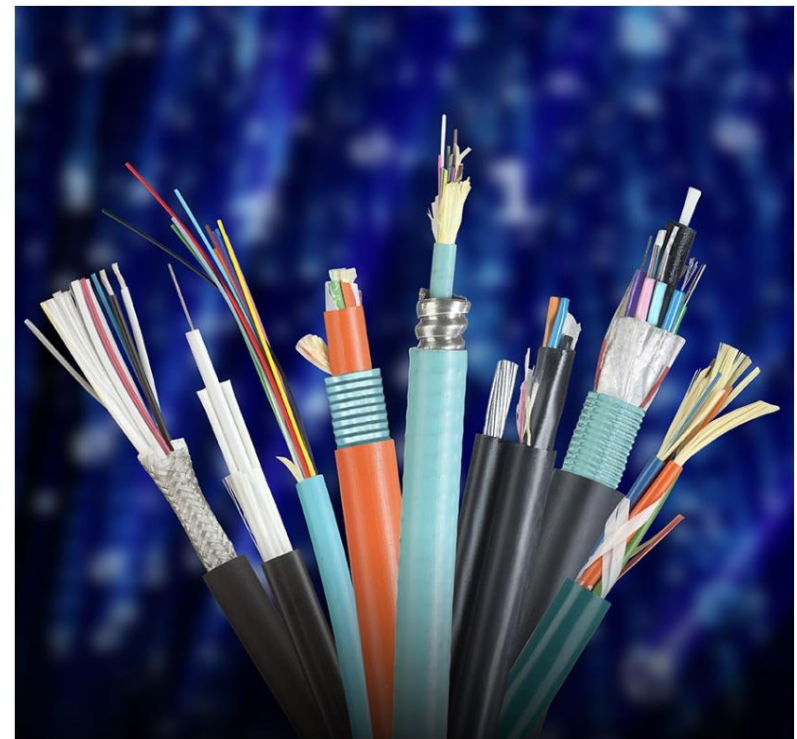
Our broad selection includes the following fiber optic cable types:

- Loose Tube
- RemCore™ – MicroTube cables
- Tight Buffered
- General Purpose
- Distribution
- Breakout cable
- Single Mode
- Multimode
- Simplex
- Duplex
- Indoor & outdoor fiber optic cable
- Combinations of the above

Remeë also produces fiber optic cables featuring:

- Armored & unarmored configurations
- Polyethylene, Low Smoke Zero Halogen & PVC jacket types
- 2 – 288 fibers
- Single mode, Multimode, OM3 & OM4 configurations
- 10 GIG fiber types
- AquaLock® dry tube technology for loose tube fiber
- Standard gel filled options
- Plenum fiber optic cable

Remeë's new AquaLock® loose tube technology ensures a dry tube.





FIBER OPTIC CABLE

Distribution, Indoor/Outdoor, OFNP/OFCP



PART ID	DESCRIPTION
33-006-76B-RYNOOP	6F SM OS2 DIST I/O YELLOW OFNP
33-012-76B-RYNOOP	12F SM OS2 DIST I/O YELLOW OFNP
33-024-76B-RYNOOP	24F SM OS2 DIST I/O YELLOW OFNP
33-006-22J-RZNOOP	6F OM1 DIST I/O ORANGE OFNP
33-012-22J-RZNOOP	12F OM1 DIST I/O ORANGE OFNP
33-024-22J-RZNOOP	24F OM1 DIST I/O ORANGE OFNP
33-006-12L-RANOOP	6F OM3 DIST I/O AQUA OFNP
33-012-12L-RANOOP	12F OM3 DIST I/O AQUA OFNP
33-024-12L-RANOOP	24F OM3 DIST I/O AQUA OFNP
33-006-12V-RMNOOP	6F OM4 DIST I/O MAGENTA OFNP
33-012-12V-RMNOOP	12F OM4 DIST I/O MAGENTA OFNP
33-024-12V-RMNOOP	24F OM4 DIST I/O MARGENTA OFNP
REMEX330676BYIALR	6F SM OS2 DIST I/O YELLOW OFCP - IAL
REMEX331276BYIALR	12F SM OS2 DIST I/O YELLOW OFCP - IAL
REMEX332476BYIALR	24F SM OS2 DIST I/O YELLOW OFCP - IAL
REMEX330622JZIALR	6F OM1 DIST I/O ORANGE OFCP - IAL
REMEX331222JZIALR	12F OM1 DIST I/O ORANGE OFCP - IAL
REMEX332422JZYIALR	24F OM1 DIST I/O ORANGE OFCP - IAL
REMEX330612LAIALR	6F OM3 DIST I/O AQUA OFCP - IAL
REMEX331212LAIALR	12F OM3 DIST I/O AQUA OFCP - IAL
REMEX332412LAIALR	24F OM3 DIST I/O AQUA OFCP - IAL
REMEX330612VAIALR	6F OM4 DIST I/O MAGENTA OFCP - IAL
REMEX331212VAIALR	12F OM4 DIST I/O MAGENTA OFCP - IAL
REMEX332412VMIALR	24F OM4 DIST I/O MAGENTA OFCP - IAL



FIBER OPTIC CABLE

Central Loose Tube Armored, OSP

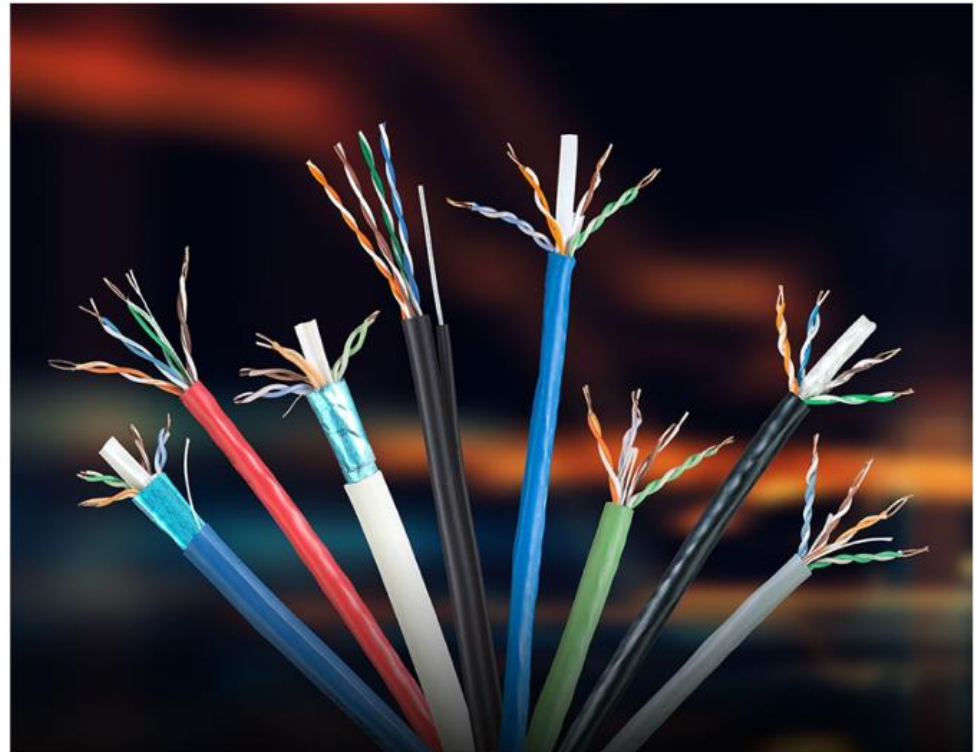


PART ID	DESCRIPTION
54-006-22J-EBCFNN	6F OM1 UNITUBE SA/SJ
54-012-22J-ENCLNN	12F OM1 UNITUBE SA/SJ
54-006-76B-EBCFNN	6F SM OS2 UNITUBE SA/SJ
54-012-76B-EBCLNN	12F SM OS2 UNITBUE SA/SJ
54-006-22J-EBCFNN	6F OM1 UNITUBE SA/SJ
54-012-22J-ENCLNN	12F OM1 UNITUBE SA/SJ
54-006-76B-EBCFNN	6F SM OS2 UNITUBE SA/SJ
54-012-76B-EBCLNN	12F SM OS2 UNITBUE SA/SJ



LAN & PREMISE (CATEGORY) CABLE

Our LAN & Premise Cables provide robust solutions for commercial enterprise networks to connect people, information and technology. Typically constructed with twisted pairs, premise cables provide performance up to 10 Gigabit Ethernet and beyond.





LAN & PREMISE (CATEGORY) CABLE

PART ID	DESCRIPTION
6UB234STPM1	CAT6A STP CMP 1000' RL
6UA234STPM1	CAT6A STP CMR 1000' RL
6UBRD234UTPM1	CAT6A UTP CMP 1000' RL
6UARD234UTPRM1	CAT6A UTP CMR 1000' RL
6B234STPENHM1	CAT6 STP CMP 1000' RL
6BNSM2O	CAT6 UTP CMP 1000' BX
6B234UTPENHM1	CAT6+ UTP CMP 1000' RL
6RF234STPENHM1	CAT6 STP CMR 1000' RL
6RF234UTPM1	CAT6+ UTP CMR 1000' RL
6RNSM2	CAT6 UTP CMR 1000' BX
6BNS224LP5M1	CAT6 UTP LP CMP 1000' RL
5BE234STPM1	CAT5E 350MHz STP CMP 1000' RL
5BE244UTP/350M2	CAT5E 350MHz UTP CMP 1000' BX
5AE244STPM1	CAT5E 350MHz STP CMR 1000' RL
5AE244UTPRM2	CAT5E 350MHz UTP CMR 1000' BX

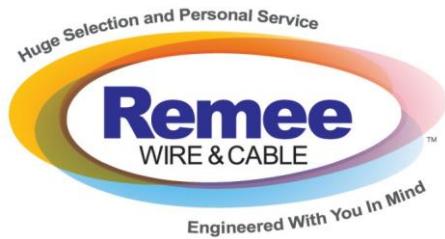


HIGH-STRAND PRO AUDIO & SPEAKER CABLE

This perfectly balanced speaker wire makes our product one of the best the in audiophile and high fidelity worlds.

Manufactured with the high-strand copper, Remees's speaker wire is the high-end solution for any modern sound system.





HIGH-STRAND PRO AUDIO & SPEAKER CABLE

PART ID	DESCRIPTION
CH1026M1W	12/2 105 STR BC SPKR CMR WHITE 1000' RL
CH1002FL2W	16/2 65 STR BC SPKR CMR WHITE 500' BX
CH1002FM2W	16/2 65 STR BC SPKR CMR WHITE 1000' BX
CH1023FL2W	16/4 65 STR BC SPKR CMR WHITE 500' BX
CH1023FM2W	16/4 65 STR BC SPKR CMR WHITE 1000' BX
CH1000FL2W	14/2 105 STR BC SPKR CMR WHITE 500' BX
CH1000FM2W	14/2 105 STR BC SPKR CMR WHITE 1000' BX
CH1024FL2W	14/4 105 STR BC SPKR CMR WHITE 500' BX





WET LOCATION CABLE

Wet Location copper cables must be durable and able to withstand severe environmental conditions. Outside Plant cables are often exposed to oil, heat, cold, moisture as well as numerous chemicals. Wet Location, OSP and buried cables are required to stand up against impact, remain flexible and maintain signal integrity.



WET LOCATION CABLE

PART ID	DESCRIPTION
6DBFLD234UTPM1B	CAT6 UTP FLD OSP POLY BLACK 1000' RL
6DBFLD234UTPMESSM1B	CAT6 UTP FLD OSP MESS BLACK 1000' RL
5AEFLDM1B	CAT5E UTP FLD OSP POLY BLACK 1000' RL
5AEFLDMESSM1B	CAT5E UTP FLD OSP MESS POLY BLACK 1000' RL
5AE350STP/POLYM1B	CAT5E UTP STP OSP BLACK 1000' RL
R001006WBTPOLYM1B	18/2 STR BC NS OSP WBT POLY BLACK 1000' RL
R001008WBTPOLYM1B	18/4 STR BC NS OSP WBT POLY BLACK 1000' BX
900912WBTPOLYM1B	18/2 STR BC SHLD OSP WBT POLY BLACK 1000' RL
900916WBTPOLYM1B	18/6 STR BC SHLD OSP WBT POLY BLACK 1000' RL
R001567M1B	RG6/U 60% ALUM BRAID FLD POLY BLACK 1000' RL
R001531WBTPOLYM1B	RG6/U 60% CCA BRAID WBT POLY BLACK 1000' RL



Coaxial cables have an advantage over other types of cables. In an ideal coaxial cable, the signal exists only in the space between the inner and outer conductors. This allows coaxial cables to be installed next to metal objects, such as gutters, without the power losses that occur in other types of cables. Coax cables with multiple shields have less leakage. This property allows the cable to carry weaker signals with less interference from the outside environment. Remeo Wire & Cable offers both indoor & outdoor copper coax cable.



PART ID	DESCRIPTION
725107M1W	RG11/U 60% AL BRAID CMP WHITE 1000' RL
725109M1W	RG11/U 60%/40% AL BRAID CMP WHITE 1000' RL
R001586RM1B	RG11/U 60% AL BRAID CMR BLACK 1000' RL
725103M1W	RG6/U 60%/40% AL BRAID CMP WHITE 1,000' RL
R001564WRM2	RG6/U 60%/40% AL BRAID CMR BLACK 1000' BX
725105/60M1W	RG6/U 60% AL BRAID CMP WHITE 1000' RL
R001563WRM2	RG6/U 60% AL BRAID CMR BLACK 1000' BX
725105/95BCM1W	RG6/U 95% BC BRAID CMP WHITE 1000' RL
R001536M1B	RG6/U 95% CCA BRAID + 18/2 CMR BLACK 1000' RL
725536M1W	RG6/U 95% BC BRAID + 18/2 CMP WHITE 1000' RL



COLOR CODING CHART

LENGTHS

- M** 1000 Ft.
- L** 500 Ft.
- T** 250 Ft.
- C** 100 Ft.
- D** 50 Ft.
- O** 25 Ft.
- ME** Length other than 500 Ft. or 1000 Ft.
- BU** Length over 1000 Ft.

PACKAGING IDENTIFICATION

- 1** Reel
- 2** Coil in Box
- 3** Reel in Box
- 4** Coil Bag

COLORS

- O** Blue
- W** White
- G** Grey
- E** Green
- Y** Yellow
- R** Red
- Z** Orange
- V** Violet/Purple
- P** Pink
- T** Tan/Beige
- B** Black

EXAMPLE

725526M1P

Product Number 1000Ft. Reel Pink



NOTES

While Remeë Products Corp. has made every reasonable effort to ensure the accuracy of the information in this document, Remeë Products Corp. does not guarantee that it is error-free, nor does Remeë Products Corp. make any other representation, warranty, or guarantee that the information is accurate, correct, reliable or current. Remeë Products Corp. reserves the right to make any adjustments to the information contained herein at any time without notice. Remeë Products Corp. expressly disclaims all implied warranties regarding the information contained herein, including but not limited to, any implied warranties of merchantability or fitness for particular purpose. The dimensions in this document are for reference purposes only and are subject to change without notice.

Remeë Products Corporation, dba Remeë Wire & Cable, and any other affiliated companies claim and reserve all rights to graphic images and text, trade names and trademarks, logos, service names, and similar proprietary marks, and any other intellectual property rights associated with this and other publications. “Remeë Wire & Cable” and other distinctive identifiers of Remeë Products Corporation and its affiliated companies as used herein are or may be pending or registered or unregistered trademarks of Remeë Products Corporation, or its affiliates, in the United States and/or other jurisdictions throughout the world. Remeë’s trade names, trademarks, logos, service names, and similar proprietary marks shall not be reprinted or displayed without Remeë’s permission and/or in any form inconsistent with Remeë’s business interests. Remeë reserves the right to demand the discontinuation of any improper use at any time.

© 2024, Remeë Products Corporation, Florida, NY, dba Remeë Wire & Cable